



KENT Etiler



The Rising Value of Istanbul: KENT Etiler

Karanfildky, which has been the backyard of Etiler for more than half a century, is now the pioneer of urban transformation in Etiler, the apple of Istanbul's eye.

KENT Etiler, the foundations of which were laid in 2023, makes a difference with its large surface area allocated to both green and social areas, and is preparing to grow new experiences that will enrich the city on these lands, where carnations were once grown.

Surrounding the park and garden areas at the center of the project, the low-rise residences take their residents away from the chaos of the city in the heart of Istanbul with their innovative architectural styles, large glass surfaces, terrace gardens and design concepts that revitalize villa life.

Standing out with its shopping and entertainment addresses as well as different food and beverage areas, KENT Etiler Cadde takes its place in the layout plan as the project's gateway to the city. Representing the creative, dynamic and innovative inner world of KENT Etiler, social clubs, wellness clinics and office units shaped according to today's needs bring a fascinating living space to the city.

KENT Etiler
VALLEY · GROVE · SLOPE · AVENUE · RESIDENCE



THE NEW PRESTIGE CENTER OF THE CITY

Located in Etiler, one of the most valuable locations in Istanbul, KENT Etiler is preparing to become the new living space of the city. Providing easy access to Levent and Maslak business centers, Istanbul's most exclusive shopping centers, as well as the Bosphorus and bridges, this project is located at the center of all the attraction points of the city. KENT Etiler also offers an indispensable option for those, who want to experience the dynamism and comfort of the city together with its proximity to Istanbul's nature, sea, forests and recreation areas.

ETILER, A REFLECTION OF ISTANBUL'S FIRST MODERN URBAN DESIGN IN THE 1950S, IS NOW PREPARING TO SHINE AGAIN WITH KENT ETILER.

ISTANBUL AIRPORT
40 KM

ZORLU CENTER
4 KM

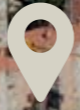
BEBEK
2,5 KM

AKMERKEZ
2 KM





KENT Etiler





VALLEY

41.816 m² Area
419 Residences - 6 Offices -
62 Commercial Units

GROVE

43.921 m² Area
265 Residences

SLOPE

27.580 m² Area
434 Residences

AVENUE

11.768 m² Area
90 Offices - 97 Commercial Units

RESIDENCE

6.429 m² Area
102 Residences -
7 Commercial Units

SLOPE

GROVE

RESIDENCE

AVENUE

VALLEY

WE SKETCH
EVERY
DETAIL OF
URBAN
LIVING





THE NEW LIFE LINE OF THE CITY: KENT ETİLER

KENT Etiler redefines urban culture for those, who want to live life at their own rhythm in Etiler, one of the elite districts of Istanbul. This special project offers a lifestyle that highlights rich experiences, nourishes your creativity and meets all the requirements of the modern world.

In KENT Etiler, you will find all the elements together, which will take you away from the hustle and bustle of the city whenever you wish and, which turn every moment into a special experience. Offering the dynamism of city life and peace together, KENT Etiler has been meticulously designed for those, who want to feel special and valuable.

Inspired by the deep-rooted identity of Etiler, KENT ETİLER is shaped around a true community spirit and an exclusive neighborhood culture, while bringing you and your loved ones together with a privileged lifestyle.

KENT Etiler offers many miscellaneous social facilities designed to appeal to different tastes and needs. While one of the city's most distinguished private education facilities rises on one side, KENT Etiler Club adds value to KENT Etiler with its social facilities, fitness areas, indoor and outdoor swimming pools, where the project residents can come together with their families, socialize and start the day refreshed.

On the other hand, office spaces that will meet all the needs of professionals in urban life and the Business Club to be established within KENT Etiler are becoming indispensable solution points of the city.

KENT Etiler Cadde, the face of KENT Etiler opening to the neighborhood, is preparing to make its mark on the city, with its restaurants offering a rich variety of cuisines, fashion and design stores that bring trends to your door, and a vibrant cultural calendar.



YOU ARE INVITED TO THE
PRIVILEGED WORLD OF
KENT ETİLER!

DESIGN-MIRACLE LIVING SPACES

KENT Etiler stands out with its spacious apartment options built with today's design approach and technology in the most exclusive location of Istanbul. The buildings, consisting of low-rise blocks with fluid and rounded lines, make a difference with their friendly atmosphere that gives the residents the neighborhood feeling they miss.

APARTMENTS WITH SPACIOUS BALCONIES AND TERRACES OPENING TO GREEN AREAS

KENT Etiler's environmentally friendly designed structures are ideal for those, who long for more personal and warm spaces. Designed to suit different lifestyles, the apartment options ranging from 1+1 to 6.5+1 offer alternatives that appeal to every need.

The apartments, which have spacious balconies and terraces opening onto green areas and wide glass facades, bring together comfort and elegance in their interior designs.

Spacious living rooms, functional kitchens and comfortable bedrooms are among the prominent elements of the interior design.



KENT VILLAS



A grove is blossoming right in the center of Etiler, the developing city of Karanfilköy, which was once a very special piece of land where carnations were grown in greenhouses. The most important residences that are intertwined with this natural habitat are the Kent Villas located on the ground floors of the buildings. Combining the freedom and comfort of villa life with the comfort elements of modern architecture, Kent Villas offer you your own oasis in the city.





ROOF TERRACES

In addition to the parks located in the heart of Etiler and the refreshing microclimate of the Bosphorus that breathes life into the region, a wide sky and city panorama are among the details that make the Roof Terraces unique. Designed to give its residents a completely different sense of freedom in Etiler, a district of the city that draws attention with its vibrant life, the Roof Terraces are a candidate to be the key to the peace you are looking for with their innovative architectural style and floor-to-ceiling glass facades opening onto the view.

A WIDE SKY AND CITY PANORAMA

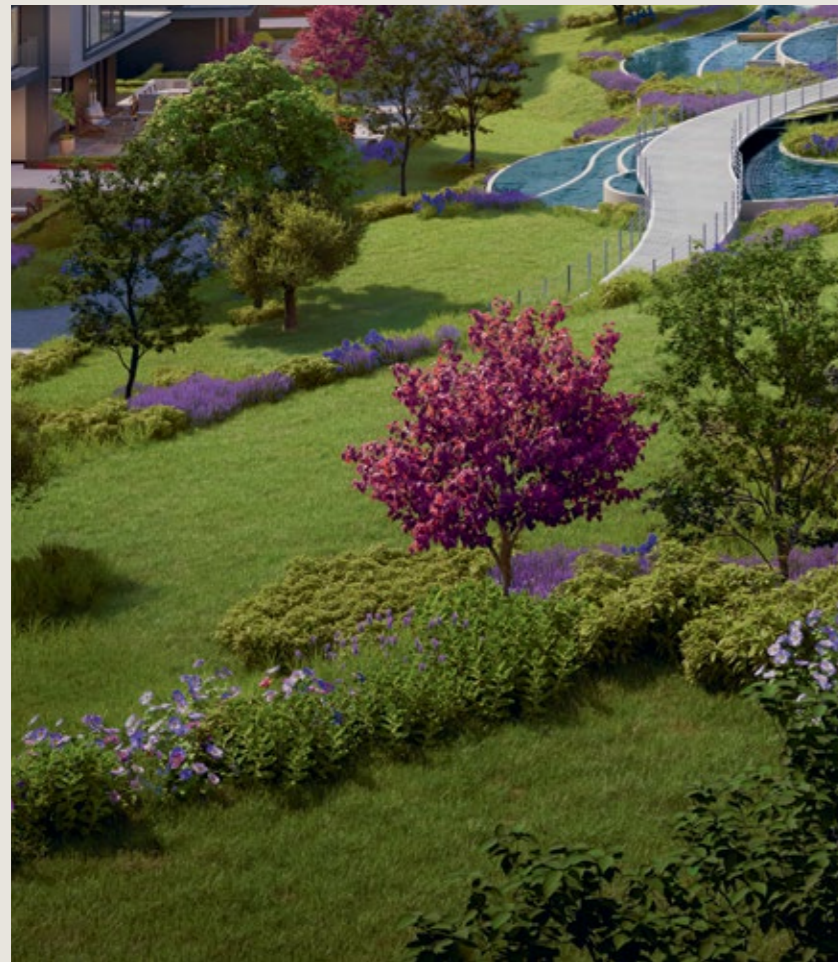


TERRACE GARDENS

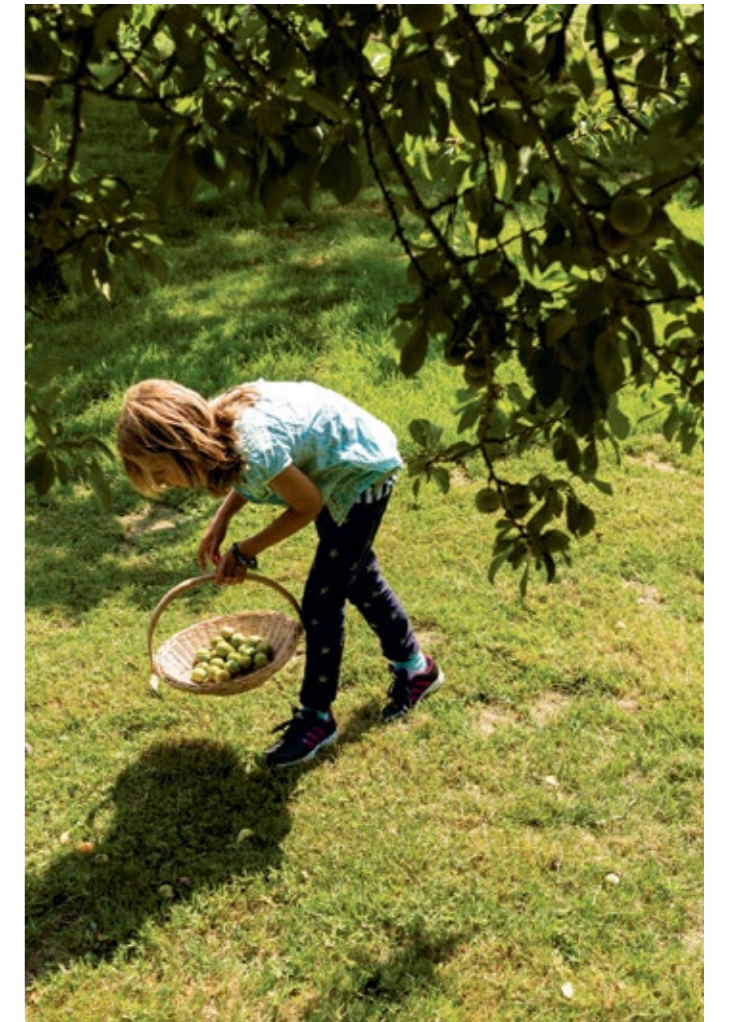
The Terrace Gardens, the most striking example of KENT Etiler's design approach that invites nature and the city inside, are located right above the Kent Villas. Offering spacious living spaces that blur the distinction between inside and outside, these special apartments allow you to create your own terrace garden with their large terraces, while taking the pleasure of living outdoors to a whole new level.



THE GREEN LINE OF THE CITY



FOR THOSE
WHO WANT TO
FEEL NATURE IN
MODERN LIFE...



A Sustainable Future with KENT Etiler

KENT Etiler, where electric vehicle charging units are installed in all buildings, encourages its residents to reduce their carbon footprint. While a portion of the energy needs of buildings are met with solar panels placed on roofs, rainwater harvested from roofs is collected in cisterns with gray water purification systems and reused in garden irrigation.



KENT Etiler stands out with its wide green areas and creative landscaping approach. The project, which has a total landscape area of 110,000 m², offers its residents a life intertwined with nature. This green texture is not limited to outdoor spaces only, it also adds breath to the interiors of homes. Surrounded by green, the apartments combined with luxurious details offer you a unique living space in KENT Etiler.



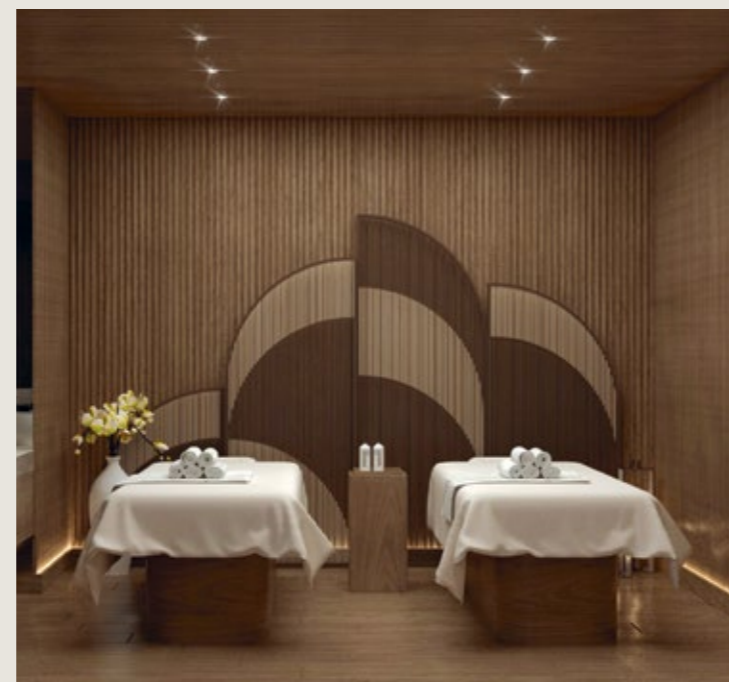


ALL THE PRIVILEGES YOU CAN FIND IN A CLUB, ALL IN ONE



THE HEART OF SOCIAL LIFE IS IN KENT ETİLER

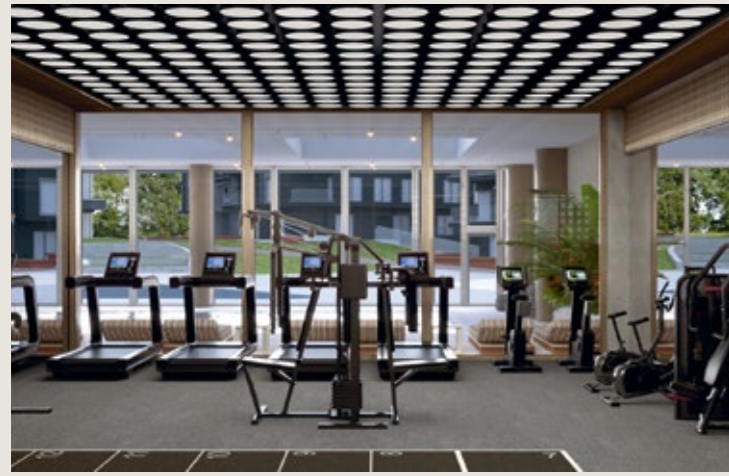
The social club area of KENT Etiler was designed as a prestigious social facility that offers peace, comfort and luxury all together. The Club, which will be preferred by the project residents to spend quality time and socialize, is positioned as a rejuvenation area, where every detail is considered, with a fully equipped fitness area, indoor and outdoor swimming pools, massage, sauna and steam rooms, as well as a cafe and multi-purpose event halls.



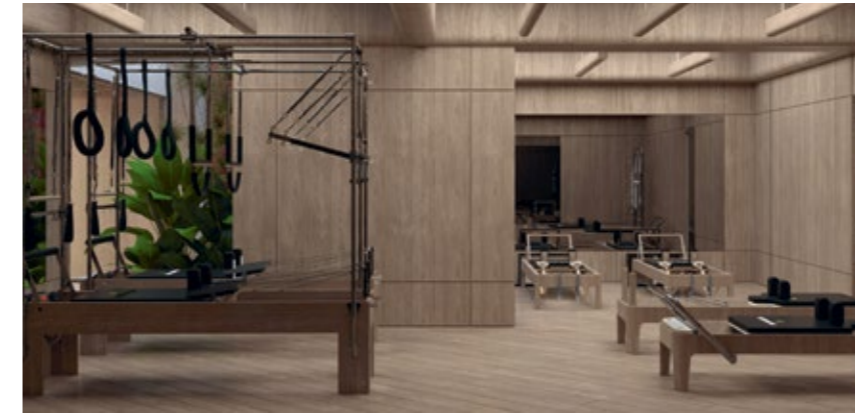
The children's playgrounds, which are the most important element of the family-friendly atmosphere of the social club located in KENT Etiler, attract attention with their environment that contributes to the social, physical and emotional development of the little ones. The playgrounds, where you can leave your children with peace of mind while you benefit from the facilities of the social facility, covered with elastic materials that minimize the risk of falling and injury; and that trigger imagination with color and theme selections, stand out as fun places that encourage curious minds for new discoveries.



AN ENERGETIC START TO THE DAY

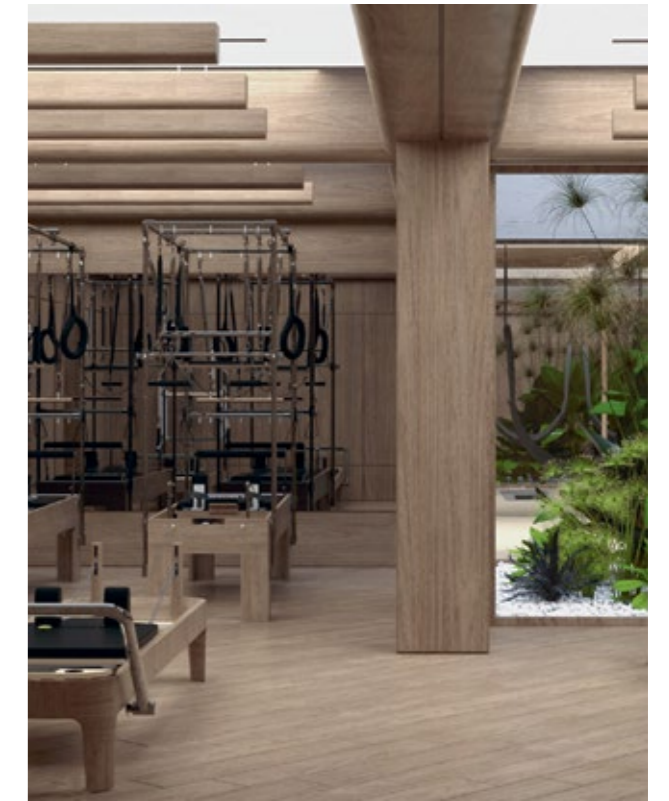


KENT Etiler Club raises the bar of quality life for its residents with its gym and spa that bring together healthy living formulas in the modern urban fabric where it is becoming increasingly difficult to achieve calmness and inner peace. This tastefully designed area, which provides you with the mental and physical refreshment you will need, stands out as the center of social life in KENT Etiler.



HEALTHY LIFE FORMULAS TO BRING MIND AND BODY TOGETHER

Designed with the users' physical and mental needs in mind, the sports area features indoor and outdoor swimming pools, as well as a wide range of state-of-the-art fitness equipment that will help you maintain your personal health program. Supporting spiritual peace and balance, this center offers its users a comprehensive health and life experience, more than just a gym, with extra functions such as yoga studio, meditation, massage, sauna and steam rooms.



MESA RESIDENCE



Positioned around a square where a City Park that will add value to the city and the neighborhood and various commercial areas and social facilities come together, Mesa Residence stands out with its range of privileged services. Far beyond a home, the dynamism of city life combines with personalized services in an area that also offers you an alternative "lifestyle".

Discounted membership advantages in prestigious clubs, concierge services that make your life easier by responding to your personal needs instantly, common areas offering a life intertwined with art and culture, with carefully selected works of art and temporary exhibitions are just a few of the privileges waiting for you at Mesa Residence.



PERSONALIZED PRIVILEGED SERVICES



Special services that make living in the city center comfortable are among the details that will make Mesa Residence indispensable. Professional home maintenance and cleaning services that will always keep your living spaces tidy and clean, valet and car wash services with expert support that offers instant solutions to your technical needs, will all together take the bar of residence life to the next level.







KENT ETİLER PUTS
ITS SIGNATURE
ON THE CITY



MERT BOYSANOĞLU

Mesa Holding CEO



With the KENT Etiler project, we are creating a piece of the city that embraces life 24/7, touches every aspect of life and meets all the needs of its residents on an area of 200 acres. We are bringing a new breath to the Etiler region with this living space where people can live, work, have fun, do sports and meet all their needs.

The Etiler region is actually a region that has completed its construction and development life. There are very few undeveloped, unplanned areas in this region.. In this KENT Etiler project, we had the chance to re-plan a very important area according to the needs of today's generation.

Within the scope of this project, which is very important for both Istanbul and Türkiye, we are transforming approximately 524 buildings and 764 independent units. We added value to the region by creating a neighborhood with well-planned green areas where all the elements of urban life come together.

Zeytinoğlu Avenue, which is the lifeblood of our project, passes through the project, descending from Nispetiye, and connects to the TEM around the Karanfilköy Mosque.

The flow on this street has been redesigned with great solutions such as details that ensure pedestrian safety without slowing down vehicle traffic, the necessary infrastructure for the visually impaired, correct lighting and sidewalk heights, parking areas, and positioning of bus and taxi stands at appropriate points. In addition, there are two public park areas in KENT Etiler. There are also sports fields, an art park and public areas where people can come and walk around.

Everyone thinks that risky buildings are only related to earthquakes, but a building that pollutes its surroundings in terms of nature is also a risky building. This region previously had inadequate infrastructure and the road network was very weak. The commercial areas were generally located on the lower floors of residences or were created by enclosing certain areas of villas. We had the chance to plan the entire infrastructure from scratch. In KENT Etiler, the residential areas, commercial areas and offices were carefully planned together. We created a mixed project that is open to all uses, which we call "mixed use", and we wanted to create a commercial street that would be lively 24/7 as the main attraction of the project.

One of our main plans here was to create a trade axis in the "shopping street" concept, of which we have seen good examples abroad. Thus, the residents of KENT Etiler and the guests coming from outside will be able to spend time and shop on this street. We will close the street at certain periods and organize festivals and events. I believe that we will meet an important need of the region by making this place the lifeblood of Etiler, a living street in a commercial sense.



DURUL KUŞDEMİR

KENT Etiler Living Areas Architect

We aimed for more than just individual apartments for KENT Etiler. We asked ourselves: What can we offer to the city and the neighborhood? Well-designed spaces between structures were more important to us in the initial phase. I think that's why our project was named KENT Etiler.

We spent the first 2-3 months dealing with the potential of the area, not the buildings. We analyzed the environment and the current situation. We prepared the master plan of the neighborhood together with urban planners. In the first step, we planned a wide green belt, and we designed this park to be connected to all the parcels. We wanted to create an oasis that would give the neighborhood a breath of fresh air and where children could play.

We moved the mosque, which was previously located on a very sloping area, to a flatter area and designed a square park connected to the green belt right in front of the mosque square. The slope of the Zeytinoğlu Avenue was too much for the disabled and for bicycle use, and thus we reduced the slope by shifting the street a little and enabled people to circulate more easily.

After establishing the main backbone in a healthy way, we examined the building typologies. When we looked at the old construction in Karanfilköy, we saw that the units were low-rise and therefore people lived close to the ground. We wanted to bring this beautiful lifestyle to our project.

To better share the land, we planned garden duplexes with smaller bases. In our project, the rate of apartments with gardens or terraces, along with the penthouse duplexes, is very high. We kept the balconies of the apartments located on the middle floors as wide as possible.

KENT Etiler was designed with a European approach. I think that people who live here will always feel lucky.



SİNEM KONU

Mesa Mesken Projects Design Coordinator

KENT Etiler is located in Etiler, one of the most established districts of Istanbul. With its central location, it also hosts trade, shopping, culture, art, business and education functions.

There are a total of 1,220 apartments in Kent Etiler. Different housing options ranging from 1+1 to 6.5+1 are offered. The common features of these residences are the relationship between interior spaces and exterior spaces. The apartments with large glass surfaces were designed to maximize the useful area. In the interior designs, natural materials were carefully detailed. With their large balconies, ground terraces meeting the greenery, and roof terraces opening up to the sky, KENT Etiler residences, in a sense, emulate the apartments of old Istanbul, Etiler. With this project, MESA's experience in housing projects meets the innovative design approach of our project authors.

The pandemic process reminded us all of the values we had begun to forget, such as neighborhood, integration with nature, and being an urbanite, and their importance in human life. These values are also the values of the KENT Etiler project. While the residents of KENT Etiler can easily benefit from all the city's facilities in the center of Istanbul, they also experience a life intertwined with nature and in communication with their neighbors.

In low-density housing plots, low-rise blocks are positioned around green areas with natural soil ground where large trees can grow. Istanbul's trees and plants stand out in this landscape design, which includes walking paths, water elements and children's playgrounds designed with the grove concept.

KENT Etiler stands out as an urban project that blends the desired life values with its location in this very special spot of Istanbul.



SABRİ PAŞAYIĞIT

KENT Etiler Residence and Commercial Areas Architect



Etiler is one of the most beautiful districts of Istanbul. However, the situation we encountered in the old districts, which cannot handle the current density, is also present here. Although Nispetiye Avenue is quite active during the day and at night, it can no longer handle public transportation, vehicle and pedestrian traffic. We also gave great importance to this issue during the design process. We considered not only the structures but also the density that the project could reach in the region, and also the transportation infrastructure, landscaping and quality of life. Ensuring the comfortable and safe flow of pedestrian and vehicle traffic with elements such as wide walking and cycling areas and open parking areas has made this trade axis the backbone of the project.

In addition to the commercial axis, a “City Park” open to the use of city residents is also one of the prominent elements of KENT Etiler. We designed the Residence buildings rising at the heart of the project with their modern and sharp architectural lines to orientate towards this view. This area, which turns into a square with social facilities and the City Park, stands out as the element that unites the entire project.

As SP Architects, we designed the commercial areas and residences of the KENT Etiler project. We are aware that the project, located in one of the most beautiful districts of the city, will become a prestige center. For this reason, the architectural elements that stand out in the interaction with the city and the social life created here were among the issues we cared about most.

We meticulously considered the commercial parcel of the project that is visible when coming from the highway, which we can actually call the “gateway to the city”. It was important that this axis, located on the face of the project that meets the city, would not create a wall effect. For this reason, we wanted to stand out with low-rise designs with fluid rounded lines.

We invited the city in by breaking the walls of the building with the large terrace areas we created on the upper floors of the blocks. In the areas where the blocks meet the ground, we included commercial activities such as cafes, restaurants and stores where daily needs can be met. This trade axis is very important, because it is an important point that will become the prestige street of the project and the new center of Etiler.



EVERY LINE THAT INTERSECTS WITH LIFE IS IN THIS KENT

Located in the heart of KENT Etiler, "KENT Etiler Cadde" stands out as the city's new cultural and social center of attraction. Designed to be pedestrian-friendly, this street offers a vibrant life at all hours of the day. Spending time here becomes a privileged experience with stores featuring leading fashion brands, art galleries, stylish cafes and restaurants. KENT Etiler Cadde is preparing to add a completely different color to the city with its fairs, vintage markets and open-air events that open from time to time.

KENT Etiler is exactly where you want to be in the city with its lively cafes, restaurants, trendy stores and dynamic social clubs!

THE TASTE LINE OF THE CITY



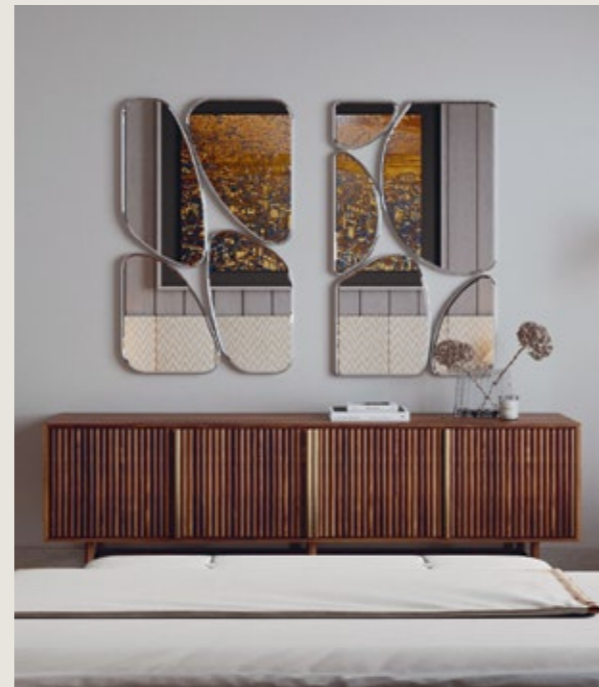
FOR THOSE
WHO CHASE
THE MOST
DELICIOUS
MOMENTS...



An inviting stage for Istanbul's popular restaurants and closely followed chefs to showcase their talents.

For the residents and regulars of KENT Etiler, life turns into a huge, joyful table. Everything you are looking for in this wide range of flavors: A wide range of gastronomic options await you, from after-work cocktails outdoors or on a scenic terrace to healthy plates prepared with fresh seasonal ingredients, from weekend brunches to flavours from all over the world.

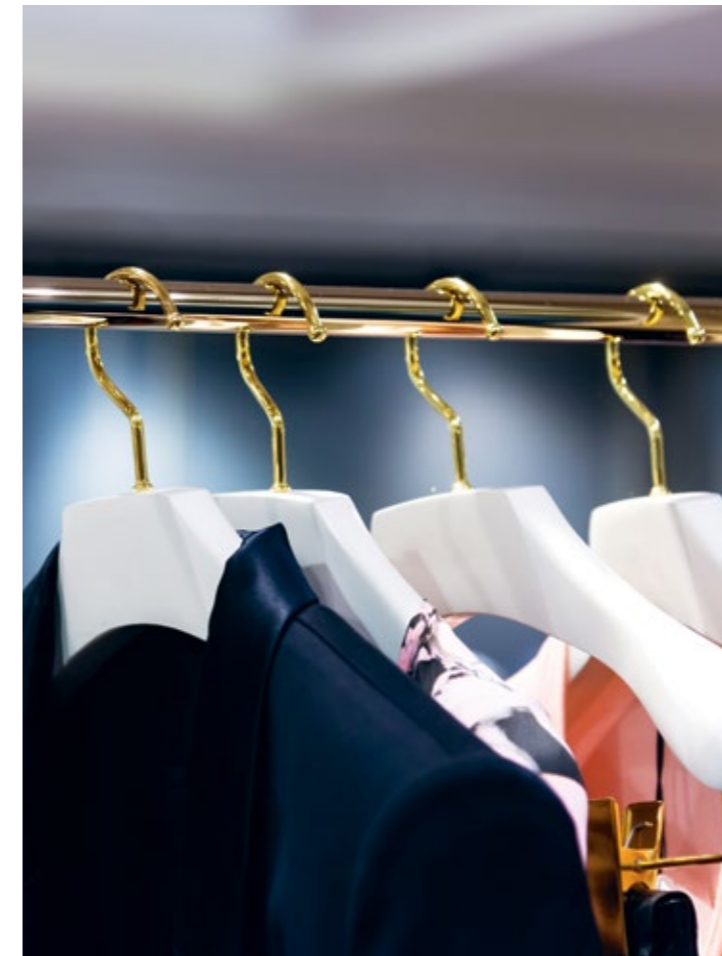
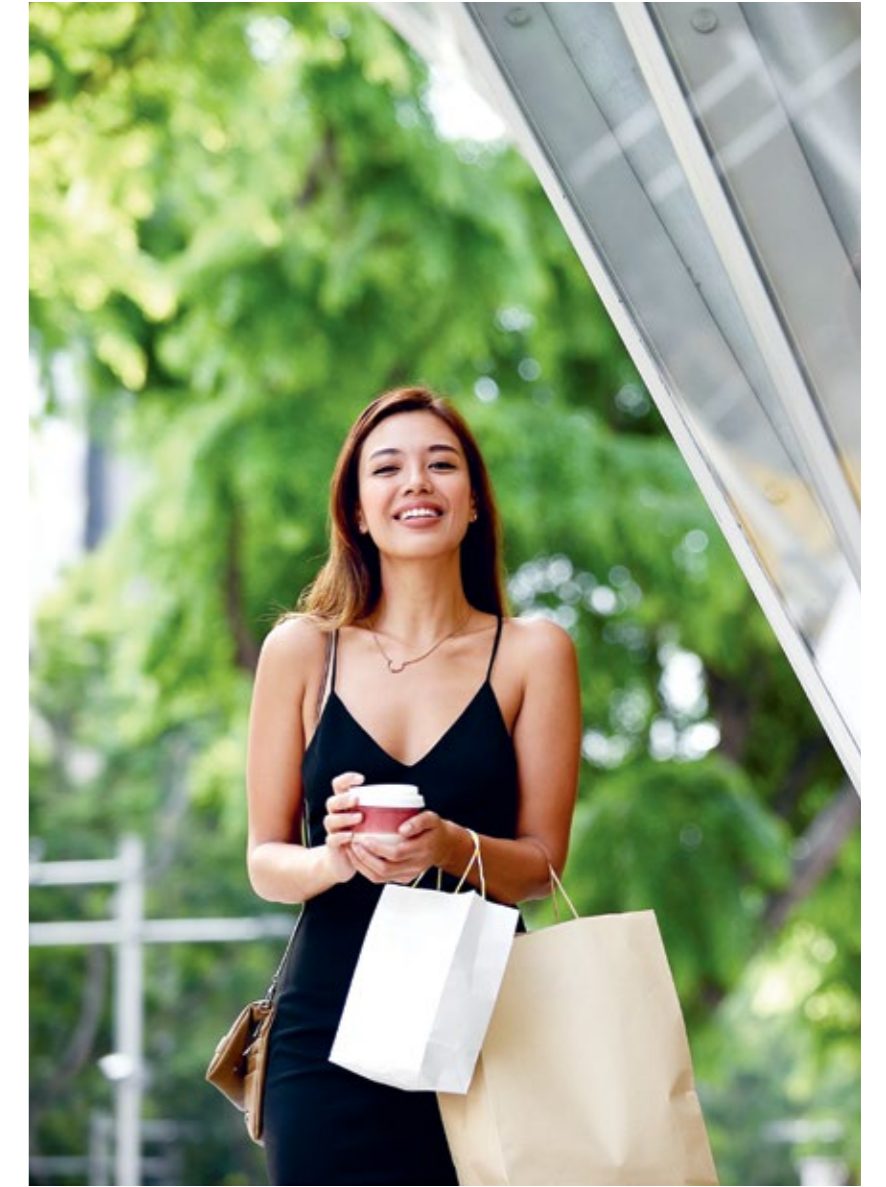




THE STYLE
LINE OF
THE CITY



FOR THOSE
WHO WANT TO
REDISCOVER
THEIR STYLE...



KENT Etiler offers a shopping experience that redefines the concept of comfortable luxury.

A world awaits you here where you can easily meet your daily needs and find everything from carefully selected boutiques to inspiring design products. In addition to high-end fashion brands, galleries, bookstores and boutique stores that will become indispensable for stylish individuals are also taking their place in KENT Etiler.

While strolling through KENT Etiler Cadde, where you will not only shop but also discover a tasteful lifestyle, you can either add a stylish dress to your wardrobe or discover the latest book of your favorite author...

This special atmosphere, where you will find elegant details and traces of quality living in every corner, emphasizes the simple yet impressive side of luxury, and offers a special shopping experience at every moment. A stage that reflects your style, meets your needs and enriches your life awaits you in KENT Etiler.

THE ENTERTAINMENT LINE OF THE CITY



The cultural meetings, exhibitions, events and clubs that continue throughout the year in KENT Etiler and the constantly developing social relations network invite you to a world where you can be inspired at any time. In this atmosphere that supports a balanced and full life, you will have the opportunity to meet new people and improve yourself while focusing on your interests.

Every corner of KENT Etiler is full of surprises! On one hand, you can enjoy a life surrounded by a variety of cultural activities, you can also watch an interesting talk show at the nearby neighborhood pub, listen to the latest album of your favorite musician, find a unique piece at an exhibition or auction that will add value to your personal space on the other hand.

A life intertwined with urban culture awaits you in KENT Etiler.



FOR THOSE WHO LOVE TO CELEBRATE LIFE...



With the dynamic social calendar and meeting points of KENT Etiler, eye-catching new colors are added to the mental portrait of Istanbul.

THE GOOD LIFE LINE OF THE CITY

KENT Etiler stands out as a living center with unique social facilities that support an active and healthy life, where sports enthusiasts can enjoy their favorite activities freely.

Those, who love to be in touch with nature, can benefit from the social areas allocated specifically for each parcel of the project, get rid of the stress of the day by storing energy on the running and walking tracks, and enjoy an active life in green areas.

Dog walking tracks specially designed for your pets are another detail that increases the quality of life, designed to ensure that both you and your lovely friends can enjoy the open air.



FOR THOSE WHO SEEK HEALTH AND BALANCE IN THEIR LIFE...

Beyond sports and active living, KENT Etiler also has common living areas where you can rest your body and mind. Areas such as yoga studios, meditation rooms, saunas and steam rooms are ideal for you to relieve the tiredness of the day and find inner peace. These special areas offer a holistic lifestyle that supports mental balance as well as physical health.

KENT Etiler allows you to live every moment to the fullest by supporting a healthy and balanced lifestyle with these comprehensive sports and living areas that appeal to all ages and interests.



THE PROFESSIONAL LINE OF THE CITY

KENT Etiler redefines business life with flexible and innovative office spaces that respond to the needs of the modern business world. Offering office options suitable for the needs of business life, the project also appeals to different business lines with its wide range of offices.

From entrepreneurs to start-ups, from doctors to professional service providers, great solutions suitable for everyone's needs are waiting for you here. Meeting rooms, private work areas and modern offices are designed to add efficiency and comfort to your business life.

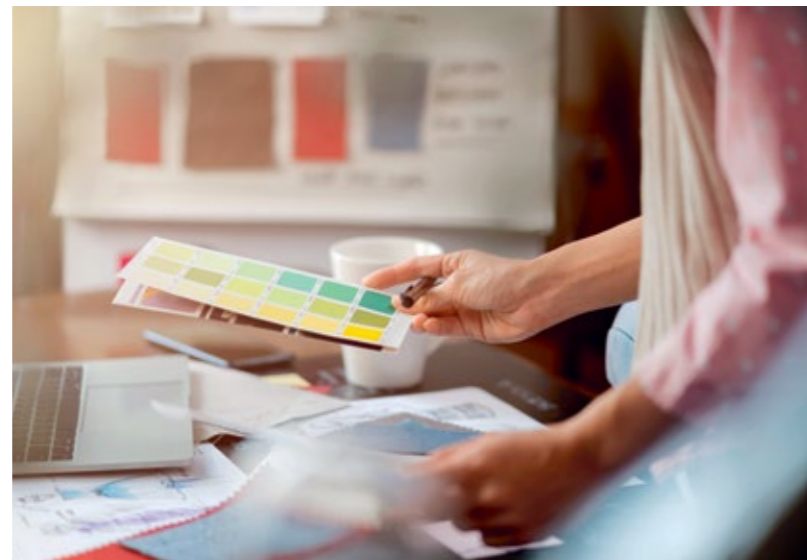


FOR THOSE WHO
ARE ALWAYS
LOOKING FOR
BETTER...

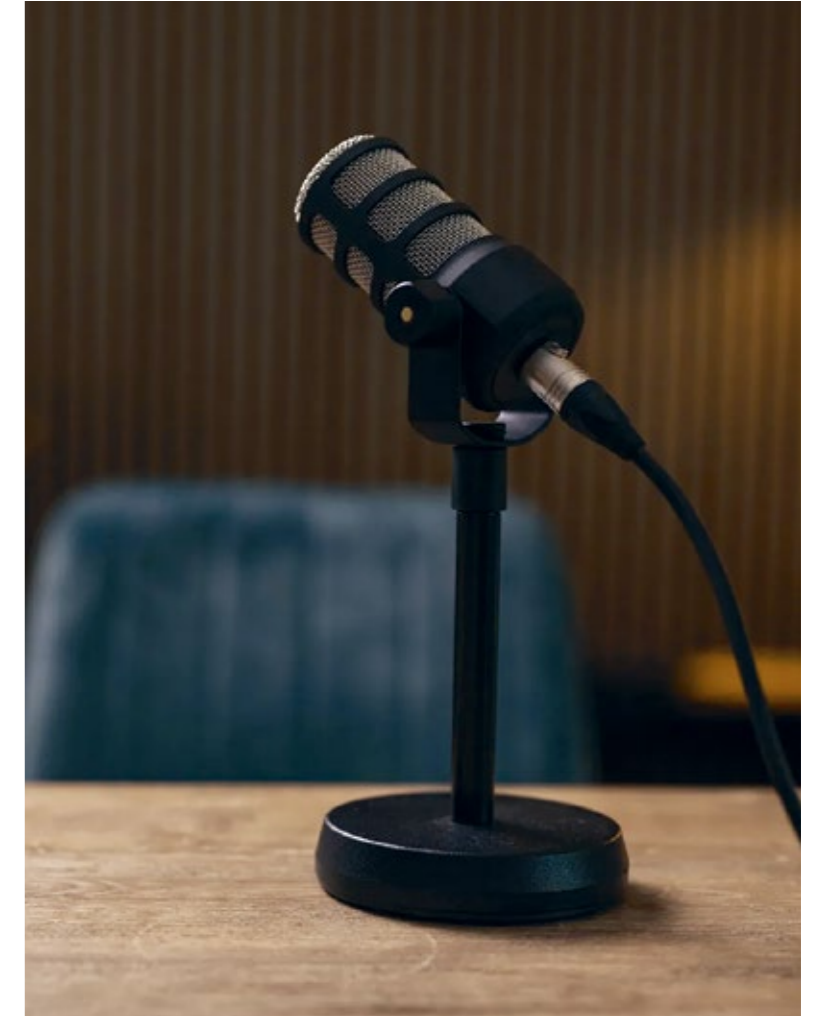


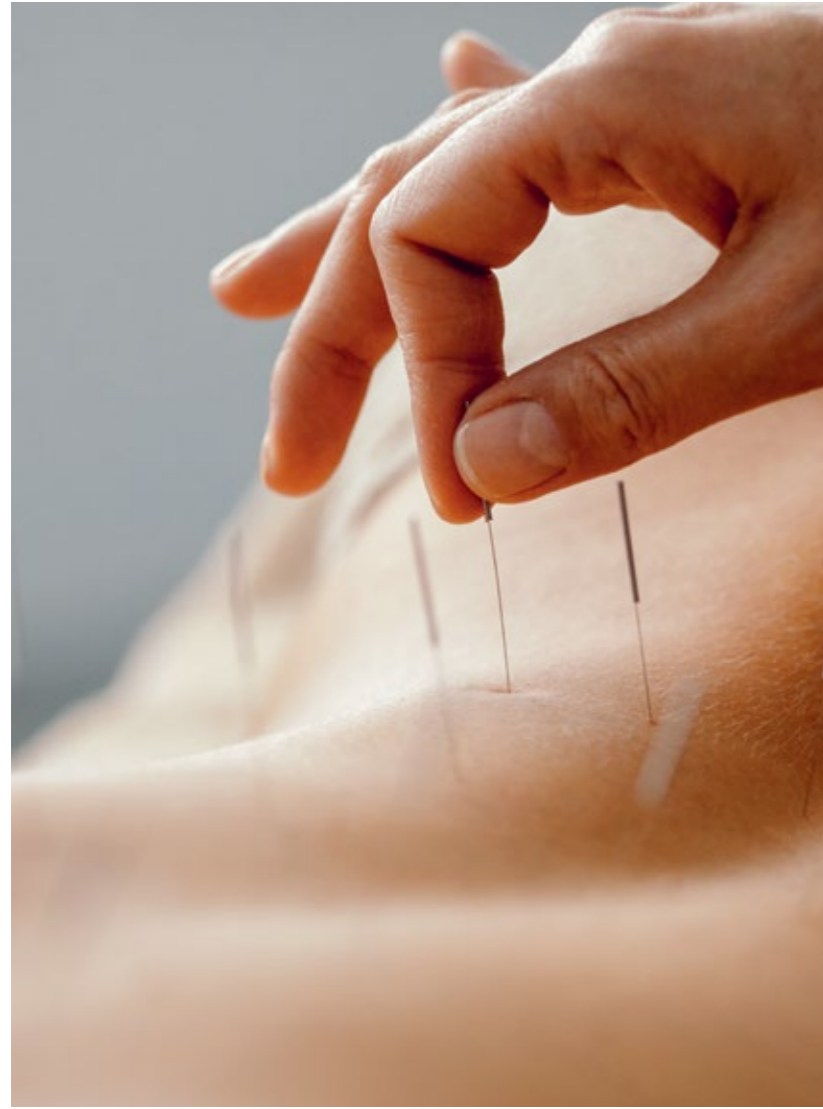
Life in KENT Etiler is based on a community that believes in the sense of belonging and the power of growing together. With the CREATIVE SOCIAL CLUB, carefully designed offices and studios for professionals, from agencies to architecture offices, from photography studios to podcast recording areas, are also included in the project. These special spaces provide a space to nurture the inspiration of creative individuals, allowing them to showcase their talents and develop new ideas.

Acting, arts and crafts and creative writing workshops are just a few of the activities that will allow you to develop your talents and build strong connections with the community. In the art and culture-filled world of KENT Etiler, an event calendar enriched with concerts, exhibitions, film screenings and bazaars offers experiences that will make every moment unforgettable. This prestigious living space, adorned with art galleries, is a source of inspiration for those who put creativity at the center of their lives. A unique community awaits you in KENT Etiler, where every corner celebrates art and creativity!



FOR THOSE
WHO WANT TO
MAKE SPACE
FOR INSPIRING
STORIES...





KENT Etiler offers a specially designed area for health professionals with its WELLNESS CLUB, focusing on healthy living. This club, carefully designed for doctors specializing in holistic health, alternative medicine specialists and other health professionals, makes a difference by offering many facilities such as appointment rooms and work areas.

WELLNESS CLUB is a unique space that aims to provide the best service to its clients by combining modern health approaches with traditional techniques such as ayurvedic medicine, functional medicine and holistic medicine. Supported by nutrition and dietician services, beauty and personal care applications, this private health club offers a unique environment for those who embrace a holistic health approach.

Offering information sharing and professional development opportunities through seminars and events for health professionals, WELLNESS CLUB is positioned as the heart of a healthy life in KENT Etiler. This exclusive club is a unique meeting point for professionals aiming for excellence in healthcare.

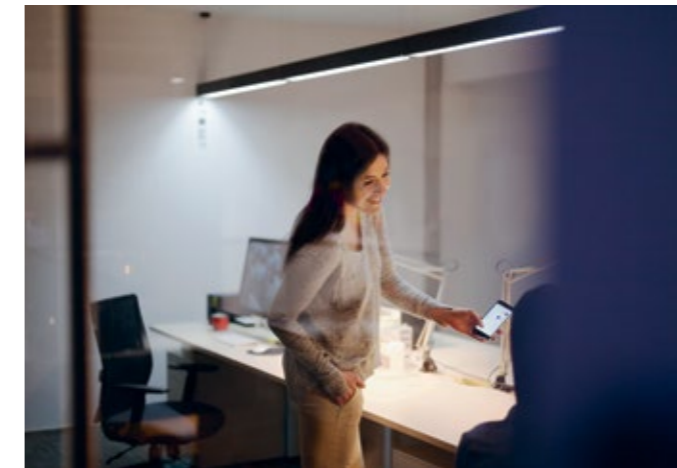


FOR THOSE
WHO EMBRACE
THE HOLISTIC
APPROACH TO
HEALTH...

KENT Etiler's WELLNESS CLUB offers a healthy living space that combines modern and traditional approaches, exclusive to health professionals.



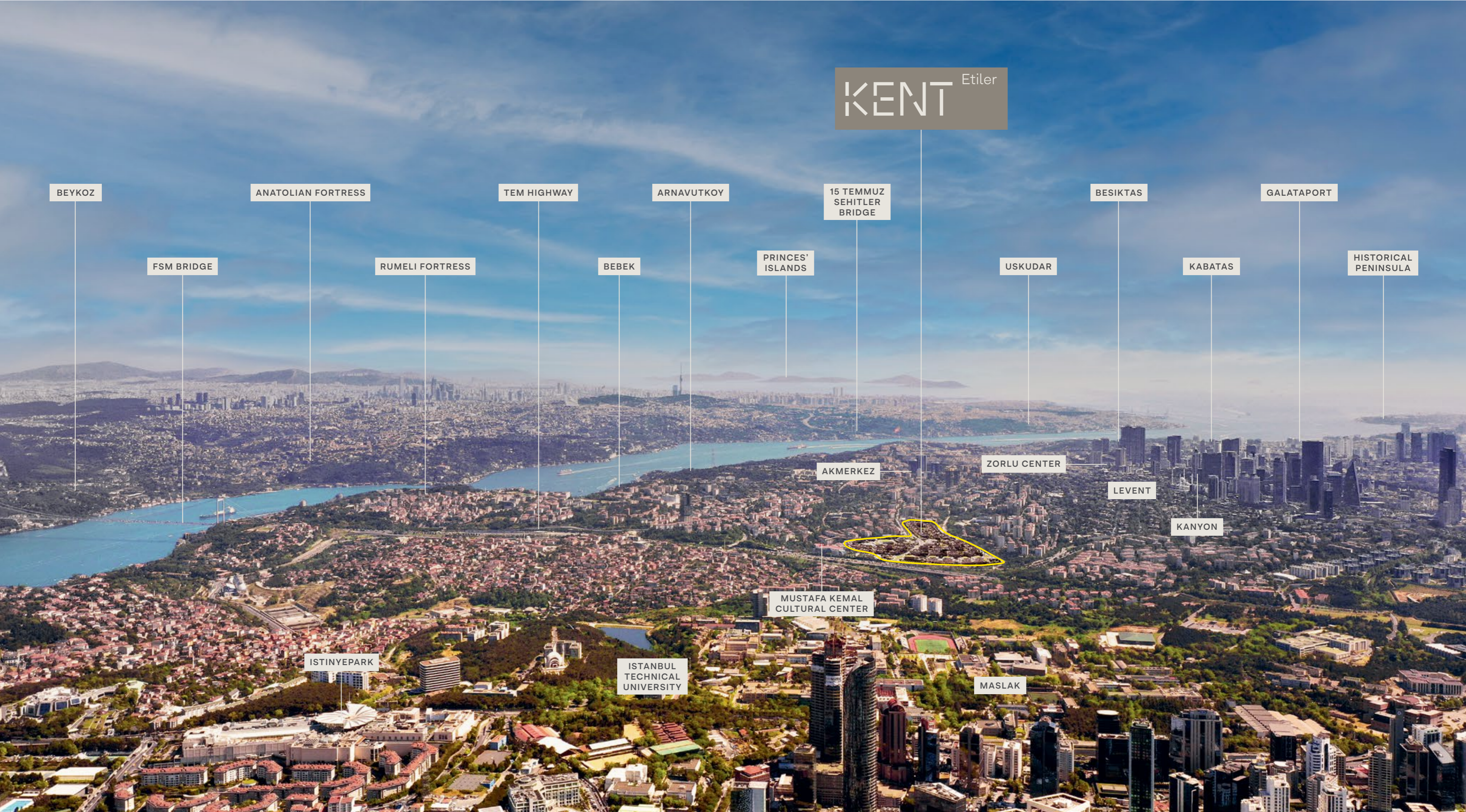
ALL THE SOLUTIONS PROFESSIONALS ARE LOOKING FOR, ALL TOGETHER IN KENT ETİLER



KENT Etiler offers a prestigious business environment with the BUSINESS CLUB, specially designed for business professionals. This area, which will function as a professionals' club, is an office world centered on good design, equipped with modern offices, study and meeting rooms for companies and employees. Efficient work areas, inspiring seminars and a rich library that provides easy access to information are some of the prominent privileges available in this special venue that responds to the needs of the business world.

BUSINESS CLUB not only helps you develop your business, but also hosts events where you can expand your professional network and share knowledge and experience. This exclusive network offers the perfect environment for professionals who want to make a difference in the business world. This special area that supports efficiency and success in KENT Etiler has been specially designed to take your business life one step further and add value to your professional life.





KENT Etiler

BEYKOZ

ANATOLIAN FORTRESS

TEM HIGHWAY

ARNAVUTKOY

15 TEMMUZ SEHITLER BRIDGE

BESIKTAS

GALATAPORT

FSM BRIDGE

RUMELI FORTRESS

BEBEK

PRINCES' ISLANDS

USKUDAR

KABATAS

HISTORICAL PENINSULA

AKMERKEZ

ZORLU CENTER

LEVENT

KANYON

ISTINYE PARK

ISTANBUL TECHNICAL UNIVERSITY

MUSTAFA KEMAL CULTURAL CENTER

MASLAK

KENT Etiler

VALLEY · GROVE · SLOPE · AVENUE · RESIDENCE



KENT ETILER PROMOTION OFFICE
444 9 366
AKAT MAH. UGUR MUMCU CAD. NO:6/4
34335 BEŞİKTAS-İSTANBUL



This catalogue is prepared for the purpose of promotion of KENT Etiler, a MESA-ASL joint investment.
The Contractor has the right to make any changes.



